

Document Generated: 09/10/2024

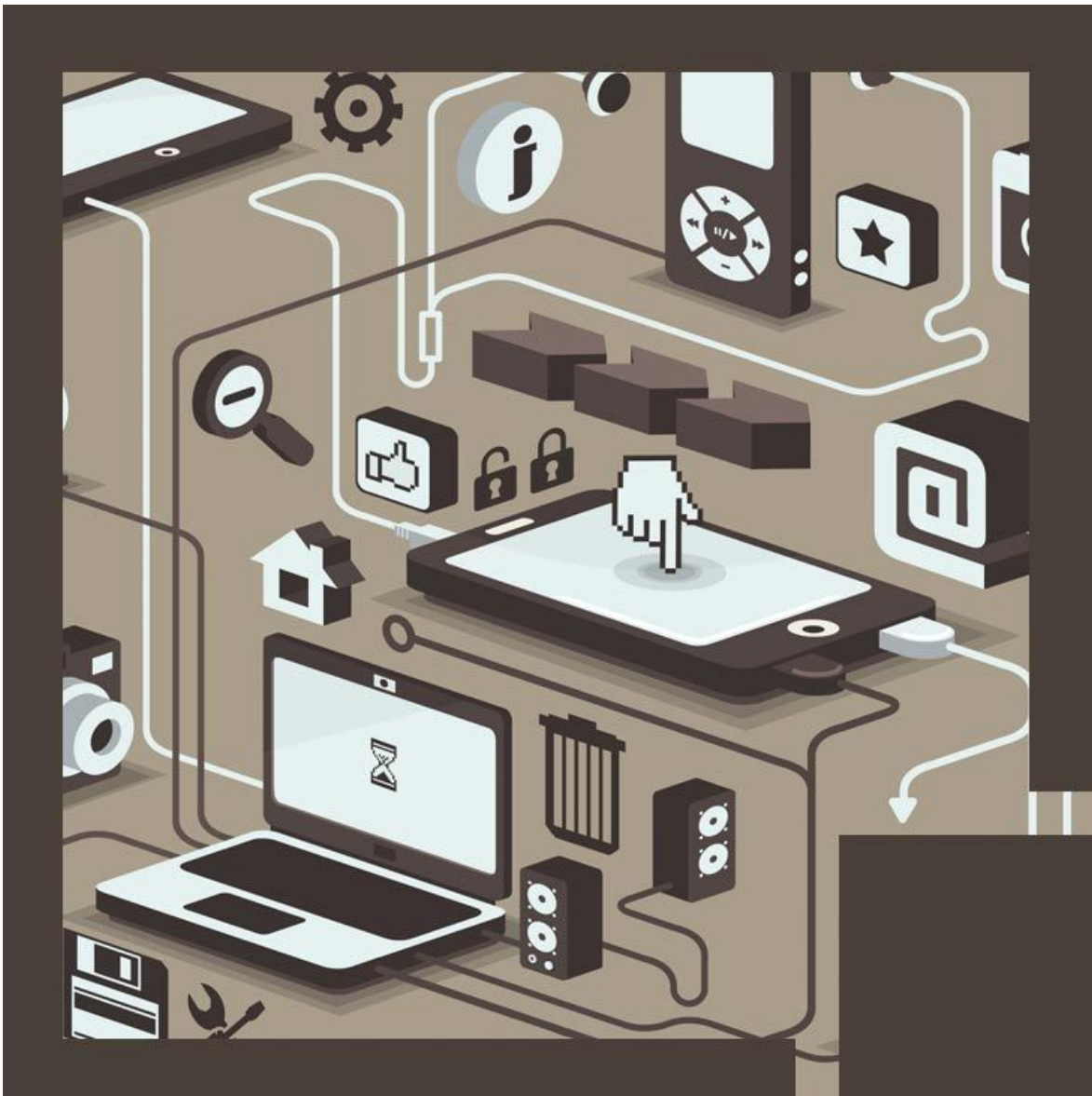
Learning Style: On Demand

Provider: Adobe

Difficulty: Beginner

Course Duration: 1 Hour

## Adobe CS6 New Features



## About this Course:

This beginner-level course is specifically designed for Creative Designers and IT Professionals striving to learn the core features and functionalities of Adobe CS6. This course overviews the new features of Adobe CS6 Illustrators CS6, Adobe Dreamweaver CS6, Adobe InDesign CS6, and Adobe Photoshop CS6. This course is best-suited for professionals having working familiarity with Adobe Suite and interested in learning the new features of the Adobe CS6 upgrade.

Adobe CS6 Software presents creative graphic designers with a whole new experience and provides a new range of tools and features for Digital Media Creation. These new features are designed to help professionals develop user-friendly graphics and design media with Adobe Suite CS6. In addition to this, the Creative Suite 6 also encompasses additional applications, new products, features, and advanced publishing services.

This course provides a brief overview for all professionals and interested candidates striving to build familiarity with the Adobe CS6 Interface and Content-Aware Tools. Professionals will also get to learn about True Vector Drawing, Layer Search & Filters, Dreamweaver Multiple Classes, and Site Manager. In addition to this, the core concepts of Adobe InDesign CS6 including Liquid Layout, Alternate Layouts, and Split Layout Viewing are also elaborated in this course.

## Course Objective:

The core objective of this course is to help professionals gain a better knowledge and sound understanding of the following key concepts:

- Adobe CS6 New Features & Upgrades
- Building Familiarity with CS6 Interface and Content-Aware Tools in Photoshop CS6
- Fundamentals of Blur Tool, Crop Tool, Patch Tool & Lighting Effects
- Understanding True Vector Drawing and Layer Search & Filters
- Key Features & Functionalities of Adobe Illustrator CS6
- Adobe Dreamweaver CS6 Multiple Classes, Site Manager, and CSS3 Transitions
- Adobe InDesign CS6 Liquid Layout, Split Layout View, and Alternate Layouts

## Audiences:

This course is specifically tailored for professionals and users working with Adobe Suite and striving to learn key features and fundamentals of Creative Suite 6 (CS6).

## Prerequisites:

There are obligatory prerequisites for the Adobe CS6 New Features Course.

## Course Outline:

## Photoshop CS6

- Interface
- Content-Aware Tool
- Patch Tool
- Crop Tool
- Blur Tool
- Lighting Effects
- Layer Search and Filter
- Text Styles
- True Vector Drawing
- 

## Illustrator CS6

- Interface
- Content-Aware Tool
- Patch Tool
- Crop Tool
- Blur Tool
- Lighting Effects
- Layer Search and Filter
- Text Styles
- True Vector Drawing
- 

## Dreamweaver CS6

- CSS3 Transitions
- Multiple Classes
- Site Manager
- Web Fonts
- 

## InDesign CS6

- New Formats
- Liquid Layout
- Alternate Layouts

- Flexible Width Columns
- Split Layout View

## Credly Badge:



### **Display your Completion Badge And Get The Recognition You Deserve.**

Add a completion and readiness badge to your LinkedIn profile, Facebook page, or Twitter account to validate your professional and technical expertise. With badges issued and validated by Credly, you can:

- Let anyone verify your completion and achievement by clicking on the badge
- Display your hard work and validate your expertise
- Display each badge's details about specific skills you developed.

Badges are issued by QuickStart and verified through Credly.

[Find Out More](#) or [See List Of Badges](#)